

Accessing Optum COVID-19 Data on TACC

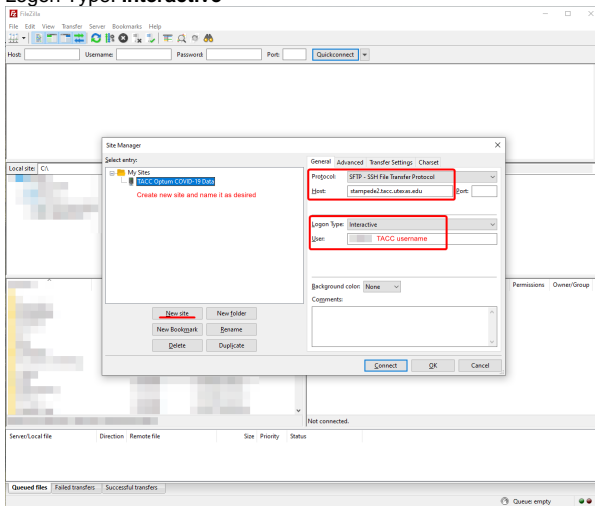
Summary

Once a researcher has completed the process to obtain authorization to access the Optum COVID-19 data, they have created a TACC account, and provided datamanagement@utdallas.edu with their TACC account details, they will be able to access the data using a SCP/SFTP Client or a Database Client.

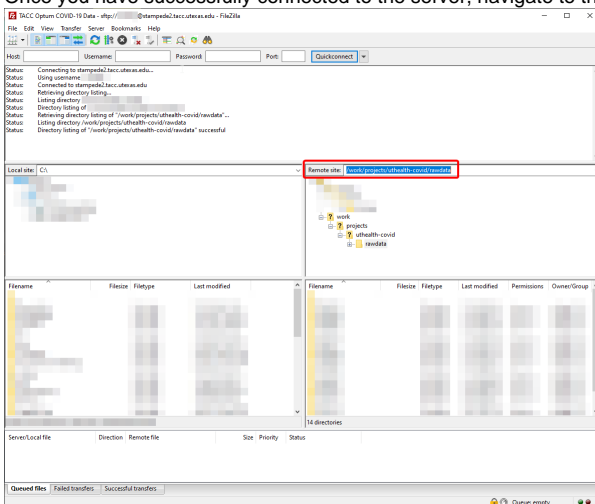
SCP/SFTP Client

If your account was just created, and/or you were just added to the project, please wait 30 minutes before attempting to connect to the server.

1. Open a SCP/SFTP Client such as FileZilla or WinSCP
2. Connect to the TACC server:
 - a. Host: **stampede2.tacc.utexas.edu**
 - b. User: **TACC username**
 - c. Logon Type: **Interactive**



3. Enter the password you use to access TACC and then enter the TACC token as part of multi-factor authorization.
4. Once you have successfully connected to the server, navigate to the following file path to access the data: `/work/projects/uthealth-covid/rawdata`



Database Client

Researchers have the option to connect directly to an SQL database to access the data. Please contact datamanagement@utdallas.edu for instructions.



Please contact datamanagement@utdallas.edu if you have any questions or if you encounter difficulties accessing the data.