

# Accessing Optum COVID-19 Data on TACC

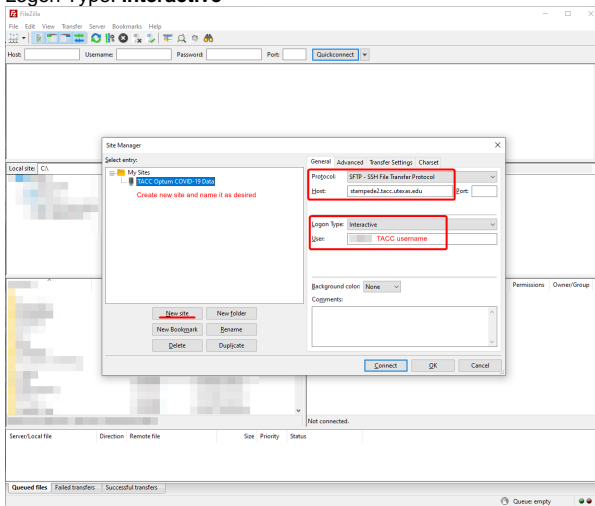
## Summary

Once a researcher has completed the process to obtain authorization to access the Optum COVID-19 data, they have created a TACC account, and provided [datamanagement@utdallas.edu](mailto:datamanagement@utdallas.edu) with their TACC account details, they will be able to access the data using a SCP/SFTP Client or a Database Client.

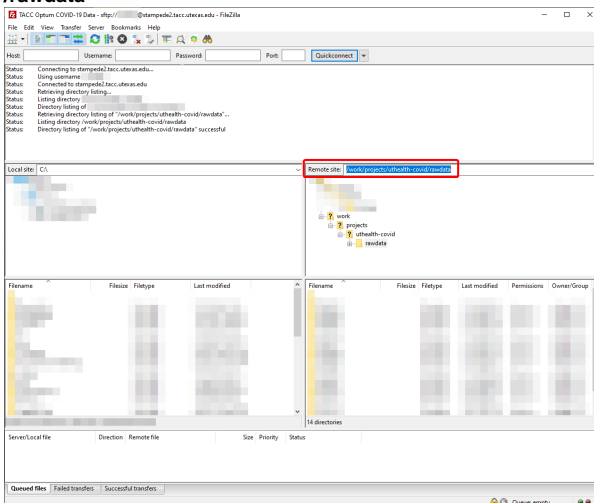
## SCP/SFTP Client

If your account was just created, and/or you were just added to the project, please wait 30 minutes before attempting to connect to the server.

1. Open a SCP/SFTP Client such as FileZilla or WinSCP
2. Connect to the TACC server:
  - a. Host: **stampede2.tacc.utexas.edu**
  - b. User: **TACC username**
  - c. Logon Type: **Interactive**



3. Enter the password you use to access TACC and then enter the **TACC token** obtained from the TACC App (as part of multi-factor authorization).
4. Once you have successfully connected to the server, navigate to the following file path to access the data: **/work/projects/uthealth-covid/rawdata**



## Database Client

Researchers have the option to connect directly to an SQL database to access the data. Please contact [datamanagement@utdallas.edu](mailto:datamanagement@utdallas.edu) for instructions.



Please contact [datamanagement@utdallas.edu](mailto:datamanagement@utdallas.edu) if you have any questions or if you encounter difficulties accessing the data.